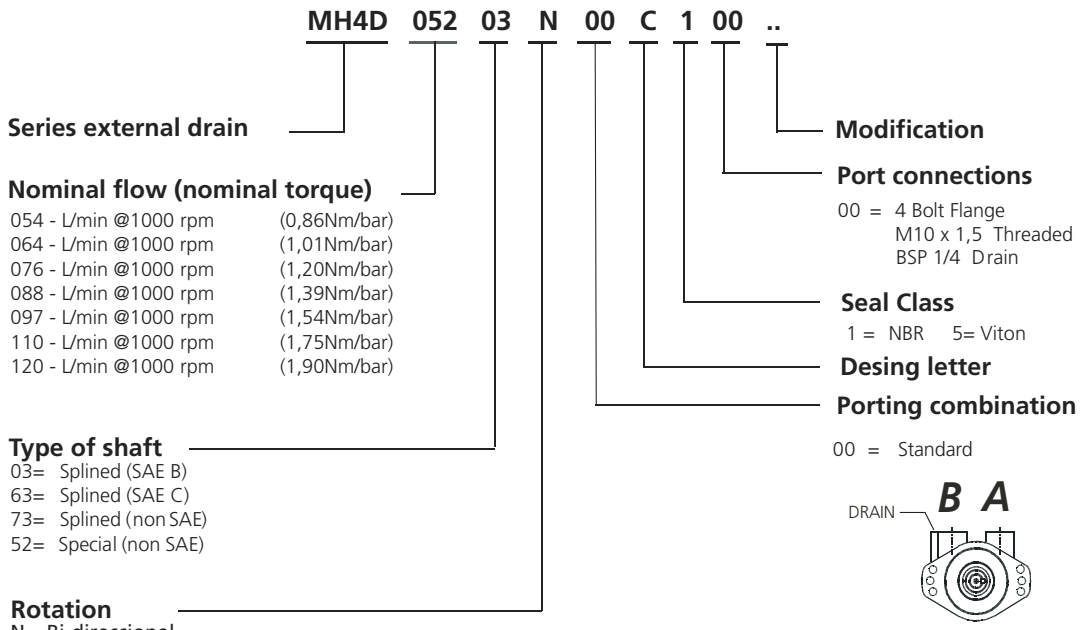


## MH4D - ORDERING CODE & OPERATING CHARACTERISTICS

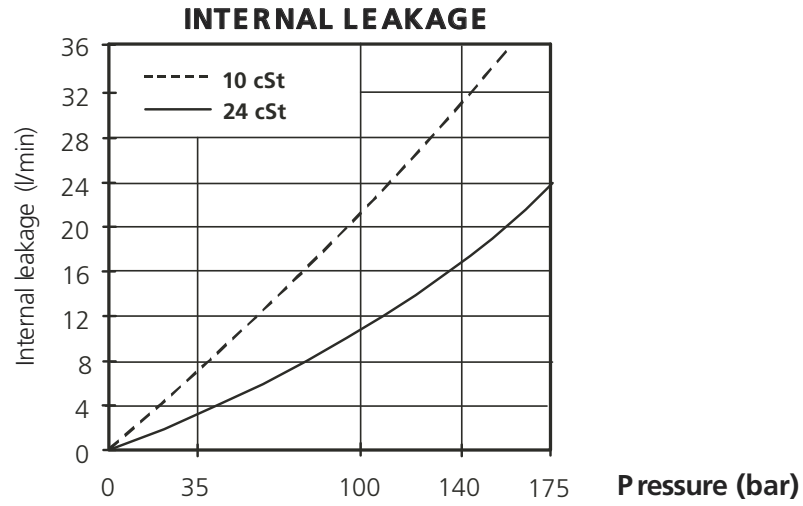
DATA SHEET



**View from shaft end:**

**CW Rotation:** A= INLET  
B= OUTLET

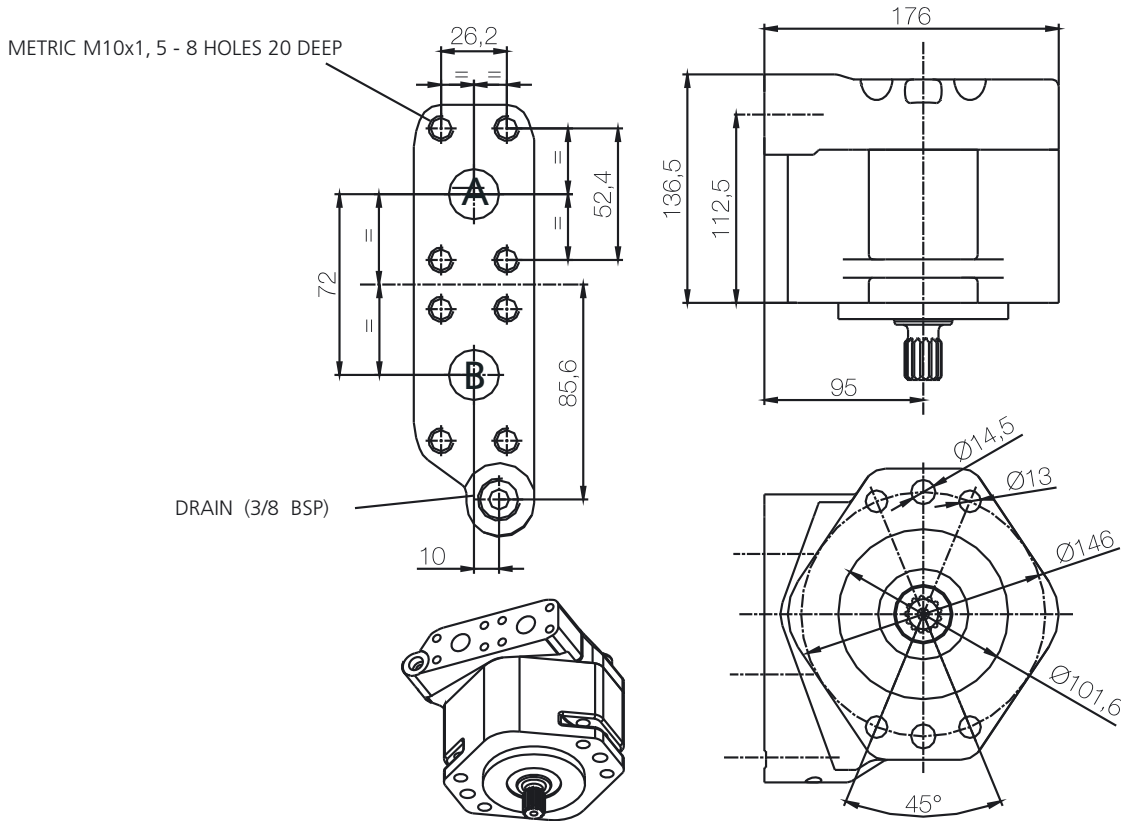
**CCW Rotation:** A= OUTLET  
B= INLET



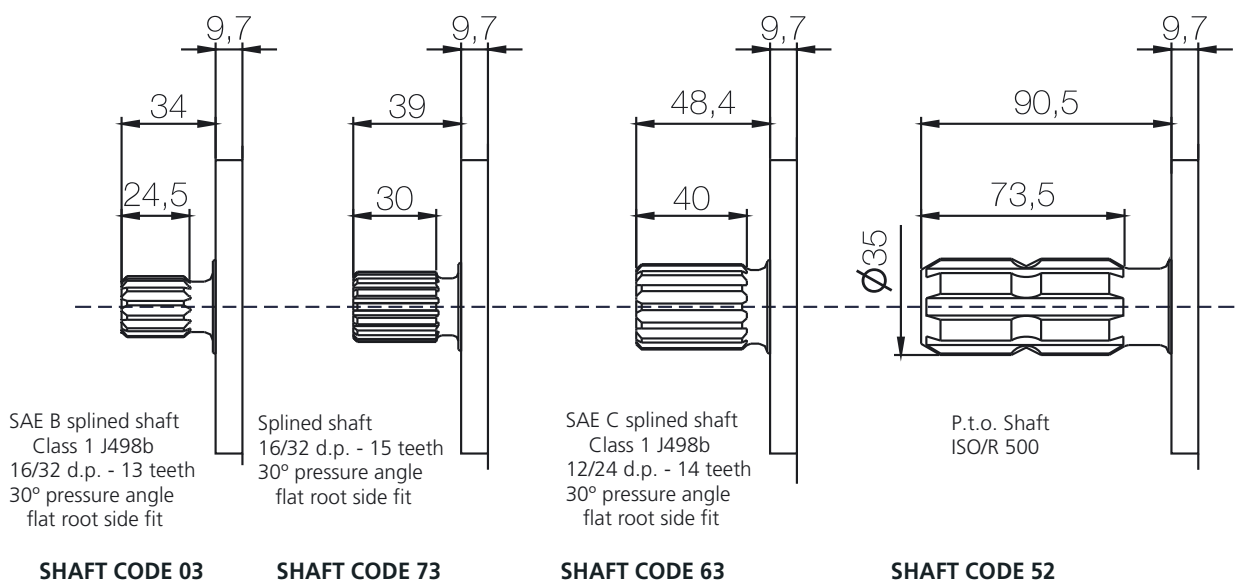
## DIMENSIONS, SHAFTS & PORT CONNECTIONS - MH4D

DIMENSIONS IN MILLIMETERS. 1" = 25,4 mm

### PORT CONNECTIONS



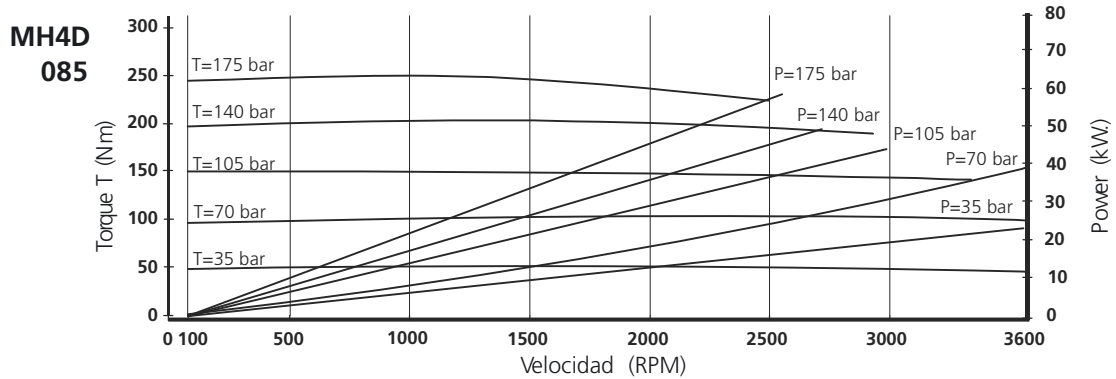
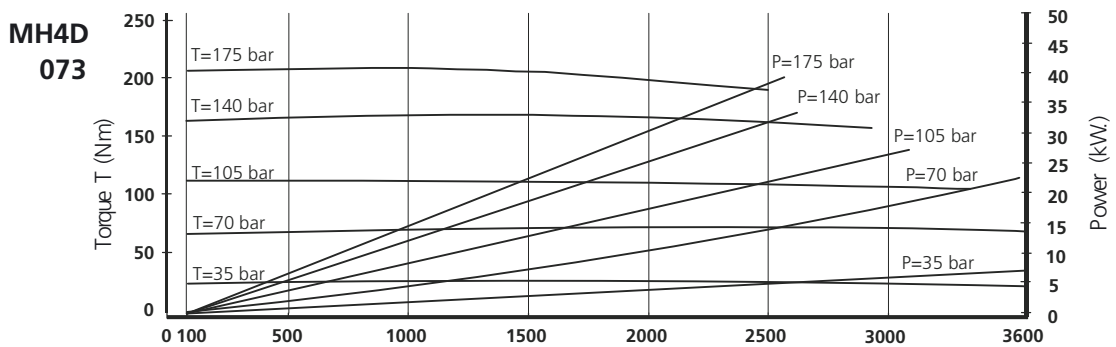
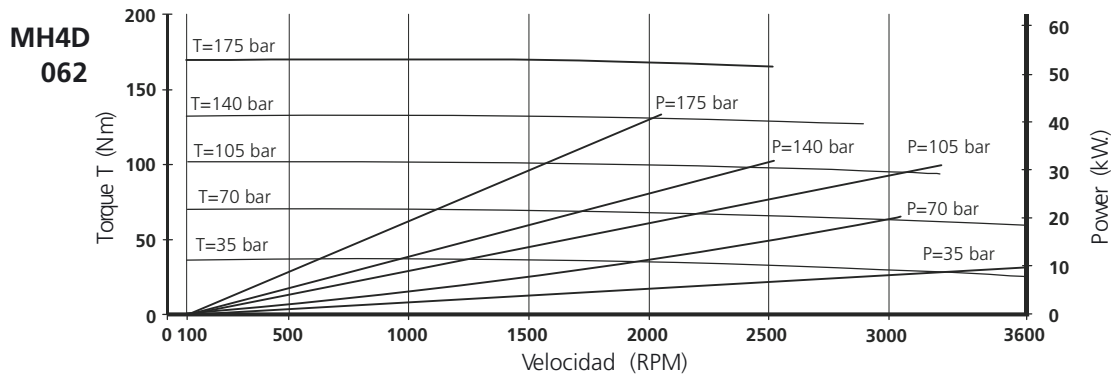
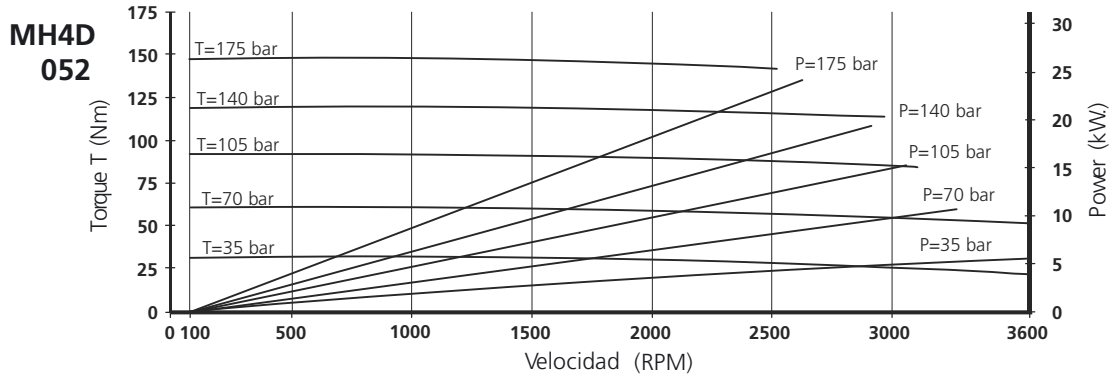
### SHAFT TYPE



Enquire about other types of shafts

## PERFORMANCE CURVES - OIL VISCOSITY : 24 CST (45°) - MH4D

DATA SHEET



## PERFORMANCE CURVES - OIL VISCOSITY : 24 CST (45°) - MH4D

